



SMARTSCAN MODULE SETUP

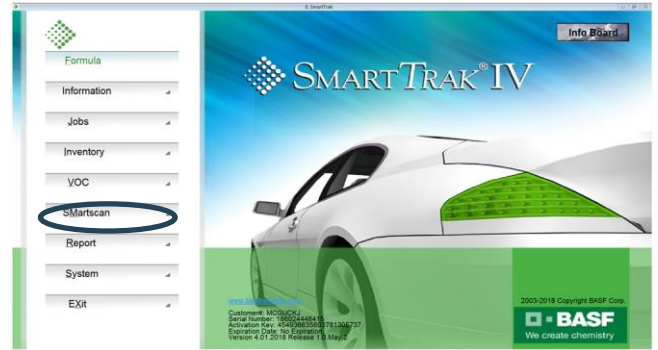
BASF AUTOMOTIVE REFINISH COATINGS





This training is a step-by-step guide to setting up your new SmartSCAN Module. The module has a new look, but all the functions that you expect from SmartSCAN will still be included through a more intuitive user interface.

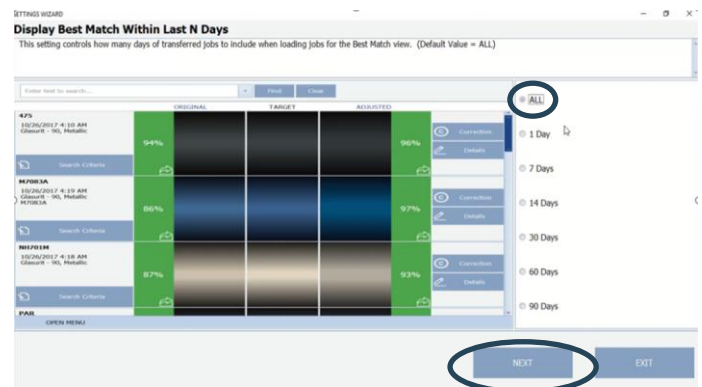
To begin, click the SmartSCAN button from the SmartTRAK home screen.



After the SmartSCAN module opens, you will be taken directly into the settings wizard.

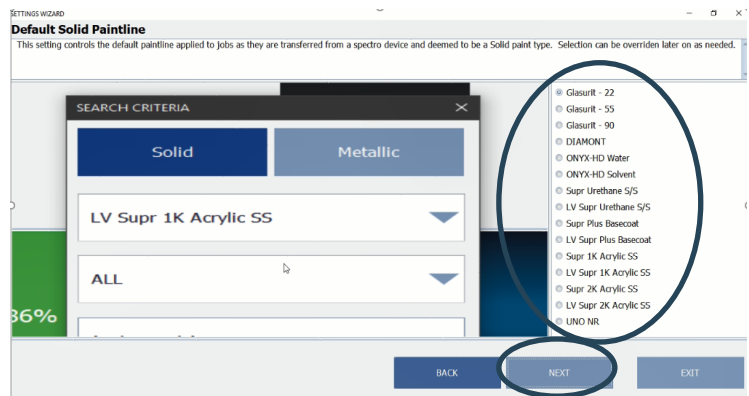
The first setting controls how many days of transferred jobs to include when loading jobs for the best-match view. It is recommended for a new system that "All" be selected. Later this setting can be changed to display jobs from the current day up to 90 days, but for now let's select "All."

Click "Next" to continue.



The next setting controls the default Paintline for Solid Formulas. Select the Paintline you will be using for solid colors.

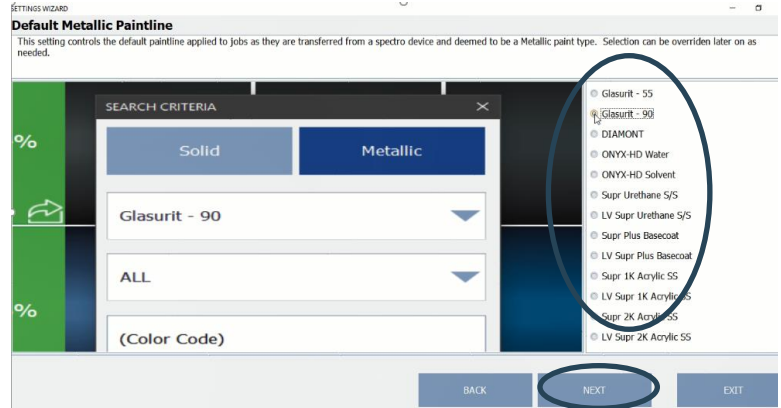
Click "Next" to continue.





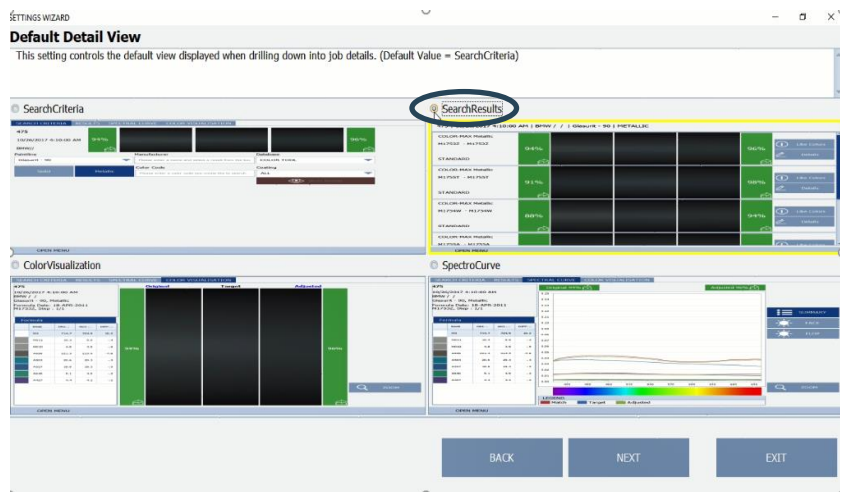
Next, we will select the default Paintline for metallic colors. We will be selecting Glasurit 90 Line for this training.

Click "Next" to continue.



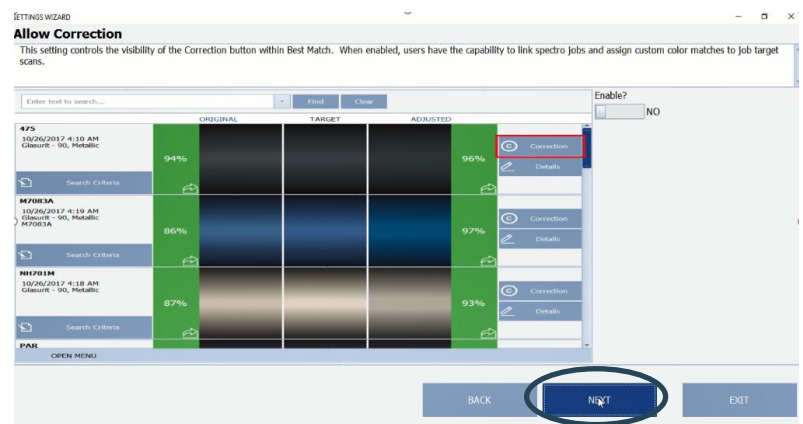
The Default Detail View setting will now be chosen. This is the screen your SmartSCAN system will default to after you have added information into the search criteria such as manufacturer and code from the best-match screen. Your choices are Search Criteria, Search Results, Color Visualization, or Spectral Curve. For a beginner it is suggested you select "Search Results" by clicking the radio button. All other views will continue to be available as we will show later in the video. This view can be changed later as you use your system and discover which view you prefer.

Click "Next" to continue.



An auto-correction feature is available in this updated module. This setting controls the view of the auto-correction button, which will allow users to attach custom color matches to target jobs. For beginners it is recommended to continue without enabling this feature. This feature will be covered in later trainings.

Do nothing on this screen. Click "Next" to continue.





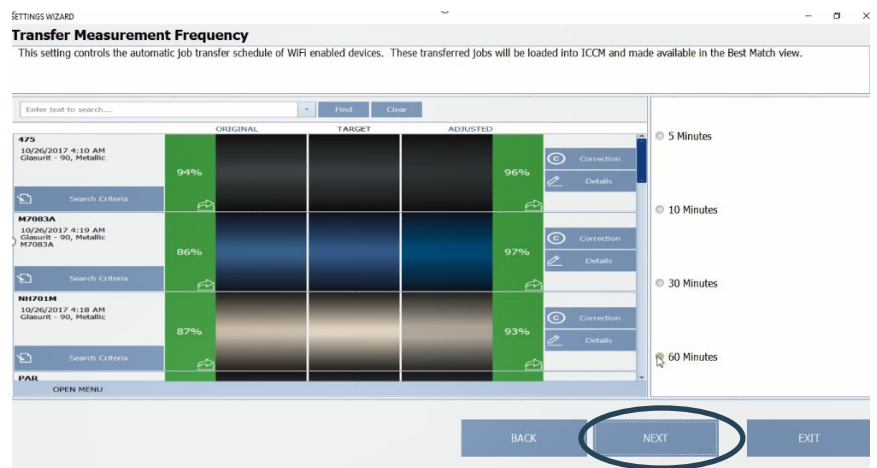
We are now at the “Allow Auto Search” setting. This setting controls the auto search option. To follow best practice, and for a more accurate color match “Enable?” is set to NO.

Click “Next” to continue.



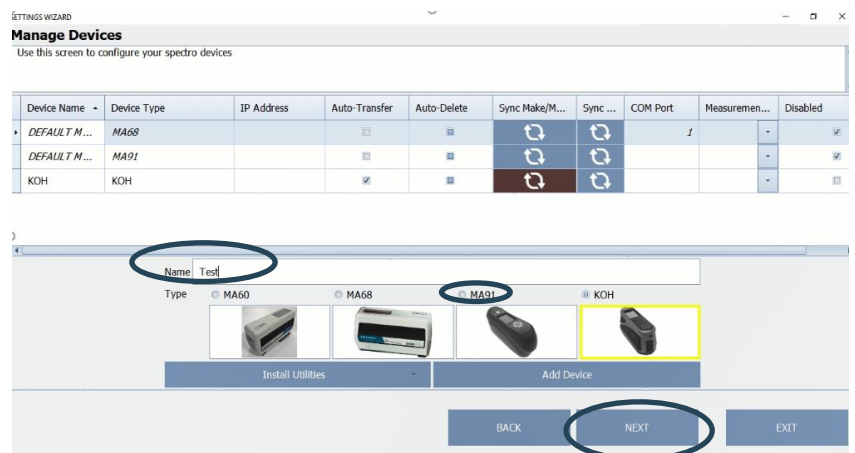
The next setting is “Transfer Measurement Frequency.” This setting controls the automatic job transfer schedule of WiFi-enabled devices. If you will be using the WiFi capabilities, select the interval that you desire by clicking the radio button of your choice. WiFi capabilities will be covered in detail in later trainings.

Click “Next” to continue.



The final setting allows you to configure your instrument. The new SmartSCAN software is compatible with MA60, MA68, MA91 and the new KOH spectrophotometer. With your instrument connected by AC adapter to power, turn on the instrument. Connect the instrument to the PC using the USB cable. Begin the instrument setup by clicking in the name field and typing the name of you instrument.

Next, select the radio button that describes your instrument, and click “Add Device.”

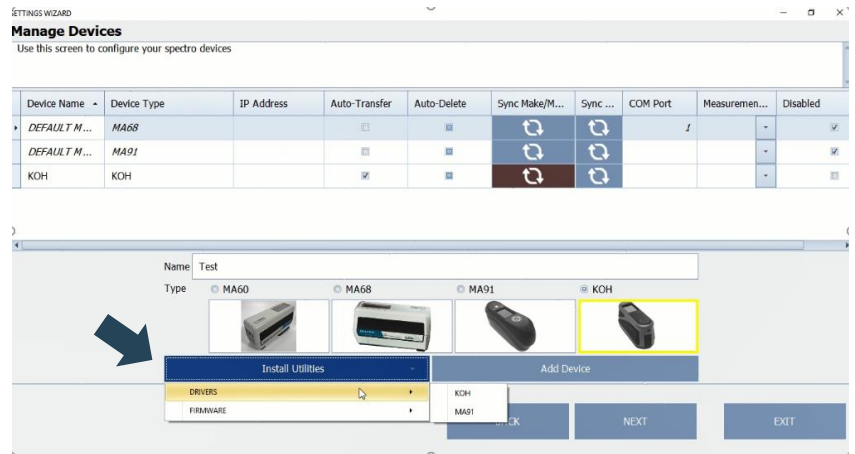




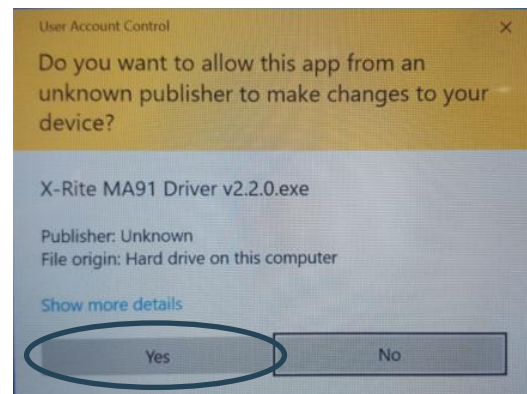
Now click the Install Utilities button which will open and give options for drivers and firmware. Installing a driver will only need to be performed if the instrument has never been used previously with SmartSCAN. A firmware update will not usually be needed unless instructed through communications from BASF.

A driver is the software that provides the interface between your device and your PC, allowing your PC and software to communicate with your device. Firmware is software that provides the latest functionality updates directly to your device.

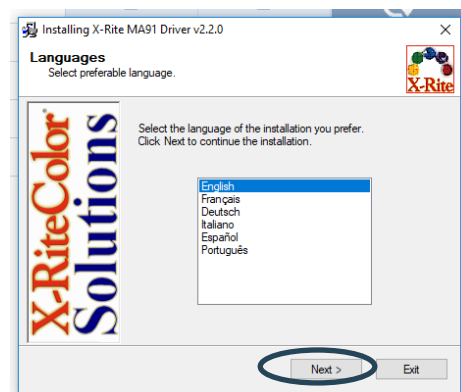
Start to install drivers by hovering over the “Drivers” option. This will provide options for your instrument. Select your device from the list and click.



An installation window will now appear. Select “Yes” to continue.

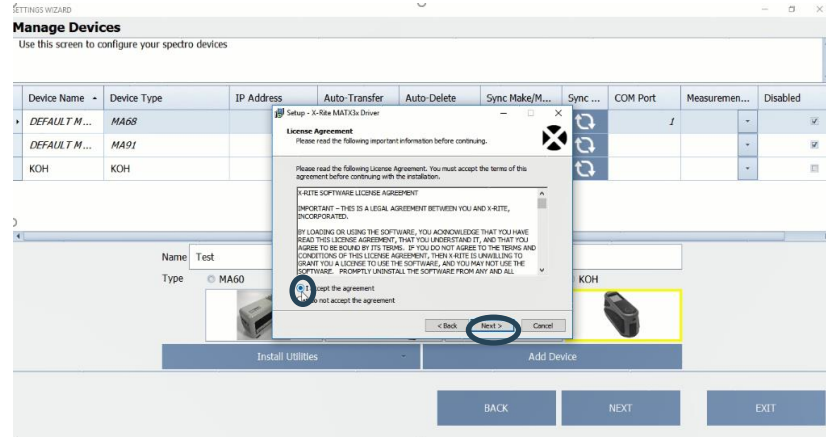


Select your language and click “Next.”

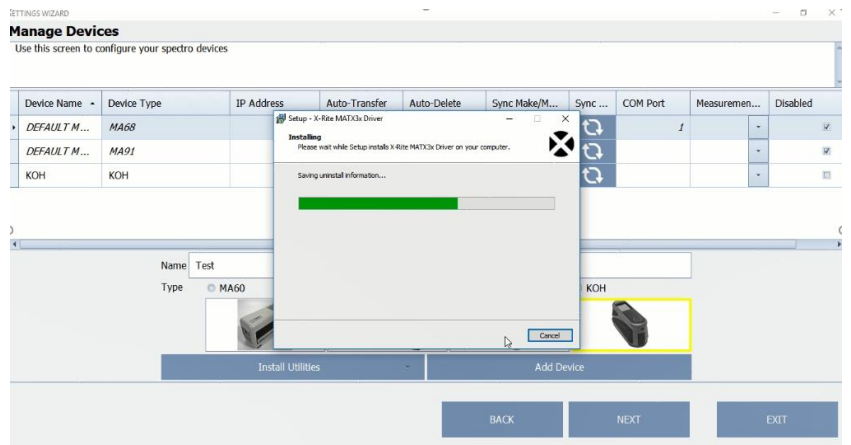




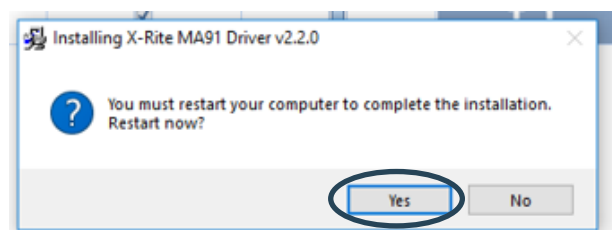
Read through and click the “I agree with the above terms and conditions” checkbox, then click “Next.”



The installation of the driver software will begin.



For the MA91 a restart is required. Click “Yes” and reopen your software after the restart has completed.

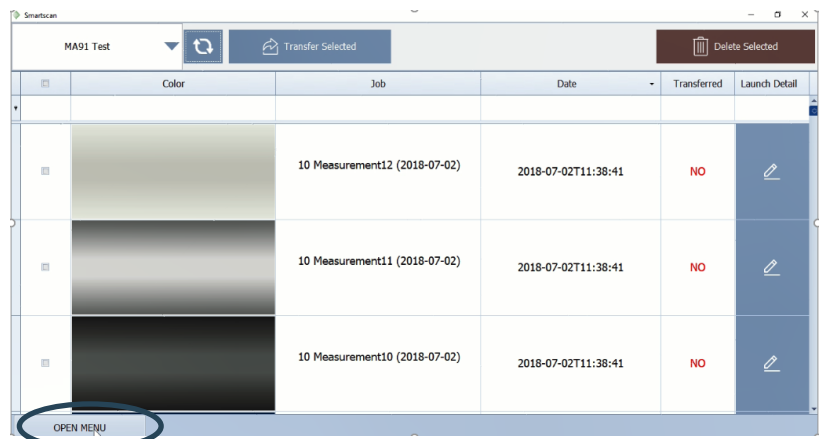




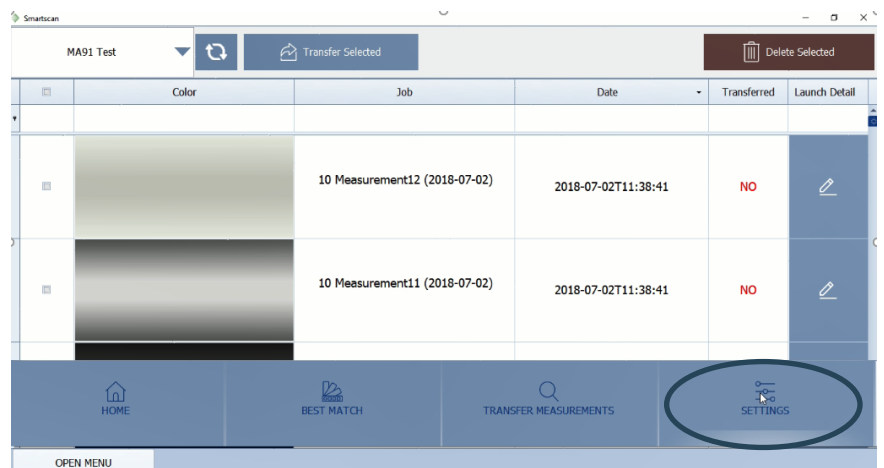
Now that you have restarted your PC, reopen the SmartSCAN Module.



For an MA91 device, take this time to return to the device menu and set the average readings for the MA91. Select "Open Menu."

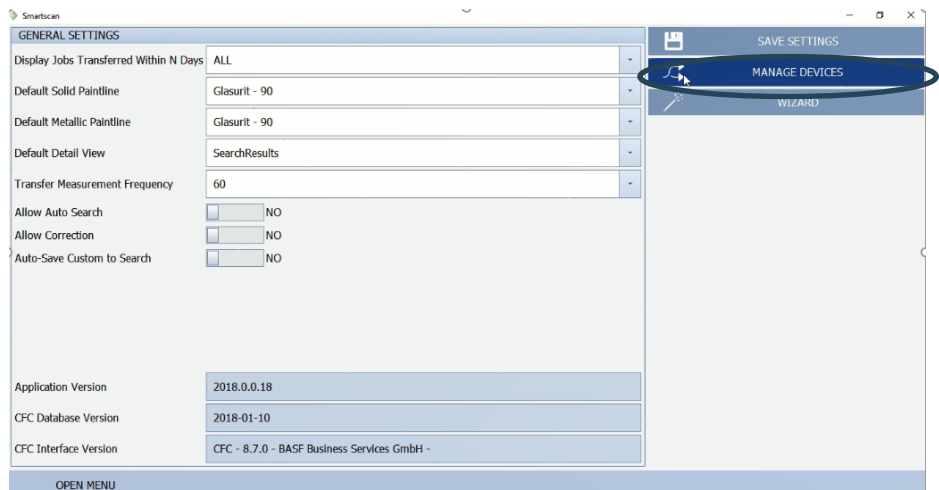


Now select "Settings."





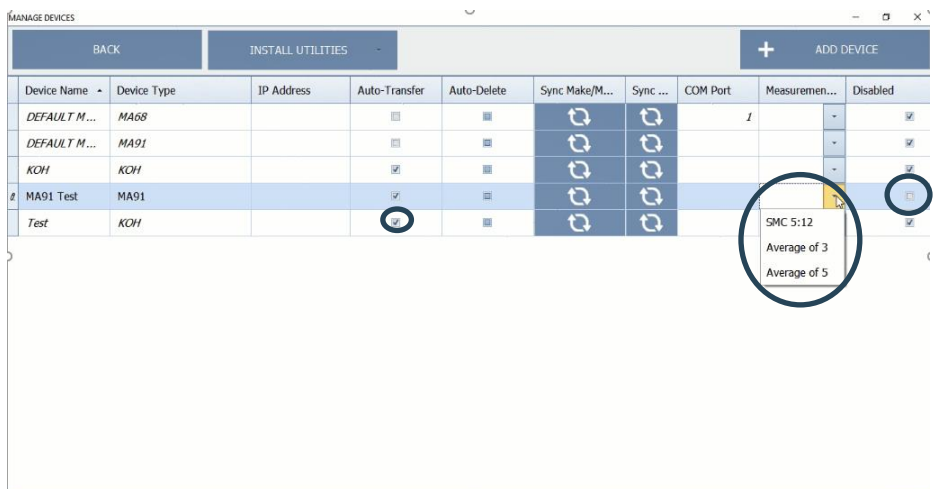
Next select “Manage Devices” and find your MA91 device in the list.



Under the measurement options column select “Average of 3.”

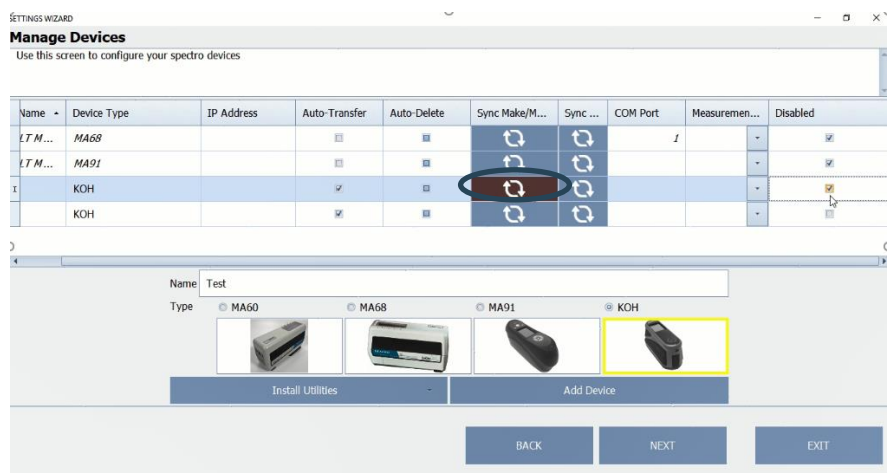
Be sure “Auto Transfer” is selected.

Disable all other devices.



Next click “Sync Make and Model.”

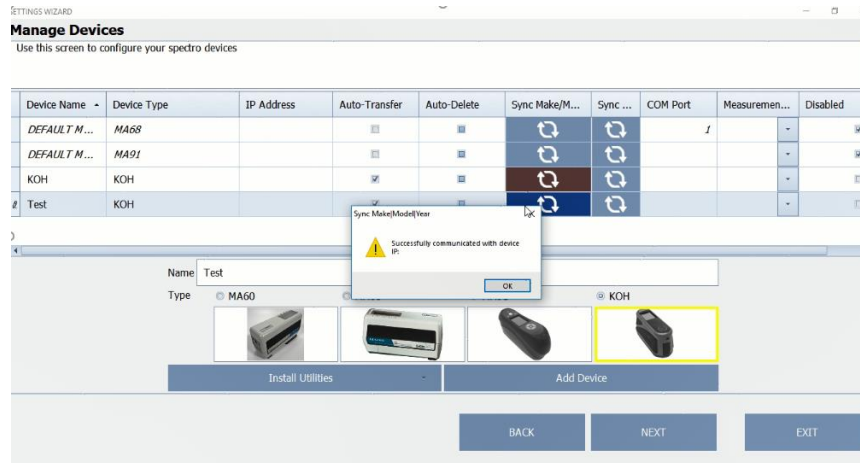
This step is essential when using the KOH device as this will update the Manufacturer list to reflect all manufacturers’ searchable formulas within SmartTRAK.



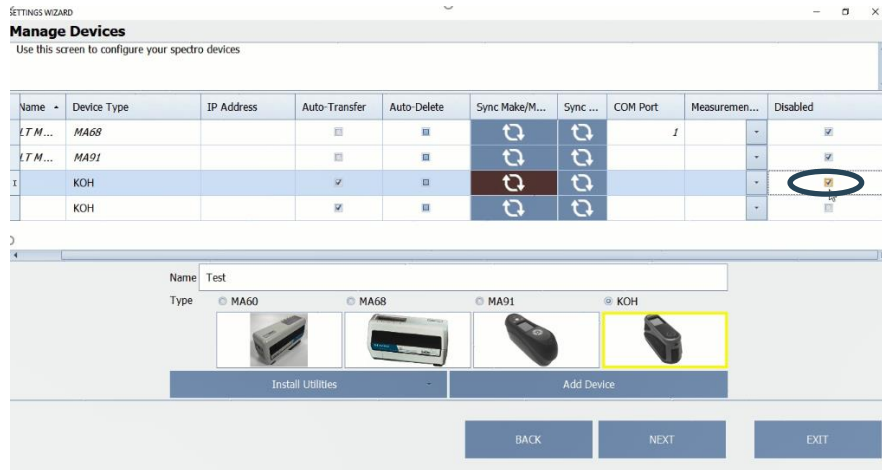


For the KOH device a popup will appear alerting you your SmartSCAN system has successfully connected to your device.

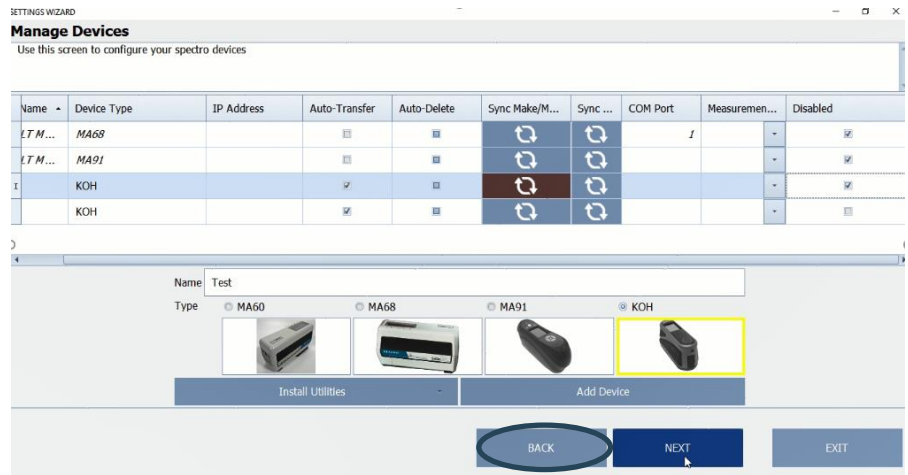
Click “OK” to continue.



Once a device is added to the list it cannot be removed. If multiple spectrophotometers are in the device list, for ease of use, disable except all the instruments to be used in the “Manage Devices” list by clicking the checkbox in the “Disabled” column.



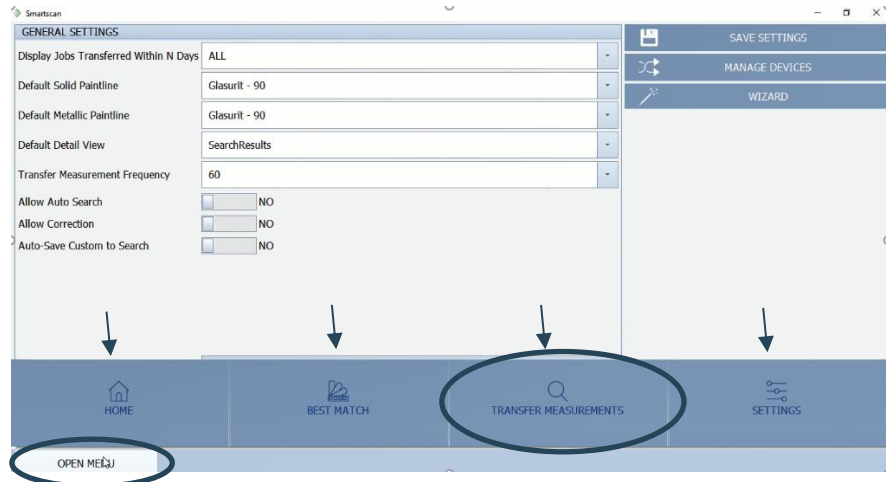
Select “Back” to continue.



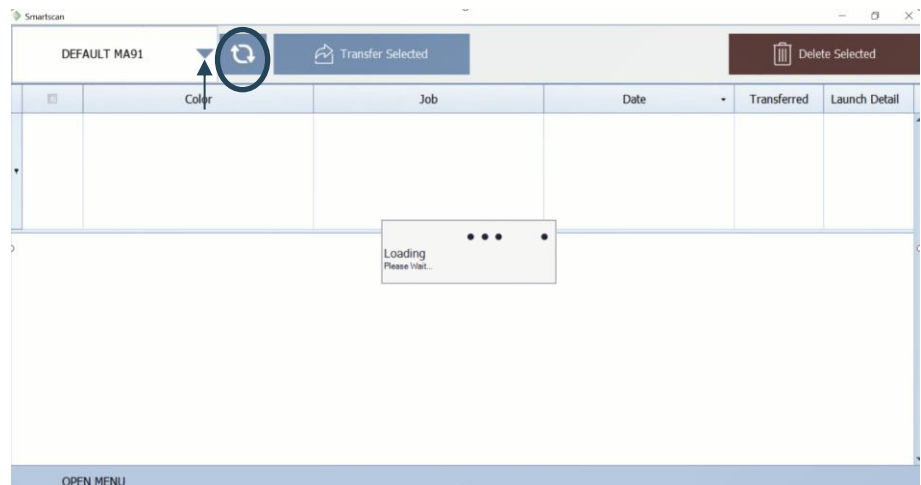


Click “Open Menu” to open the SmartSCAN main options menu; four options are available. Select “Home” to return to the home screen, which is the SmartTRAK Main menu. Select “Best Match” to view jobs, select “Transfer Measurements” to transfer measurements from the spectro to you SmartSCANSystem and the “Settings” button provides access to change the settings for the SmartSCAN module.

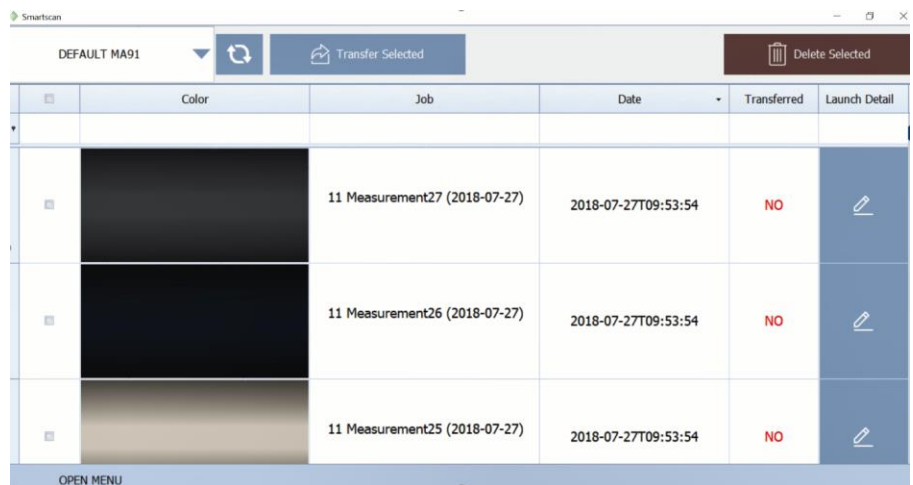
Click the “Transfer Measurements” button.



Be sure your device is selected in the dropdown and jobs will automatically be retrieved for viewing into the Transfer Jobs screen. If the transfer does not begin automatically click the “Sync” button.

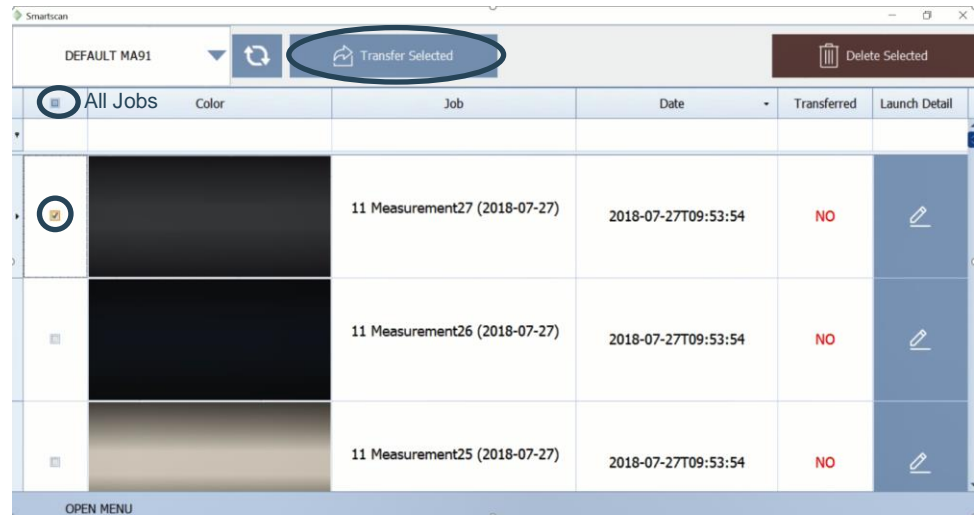


The jobs from your spectro will now populate into the Transfer Jobs screen.

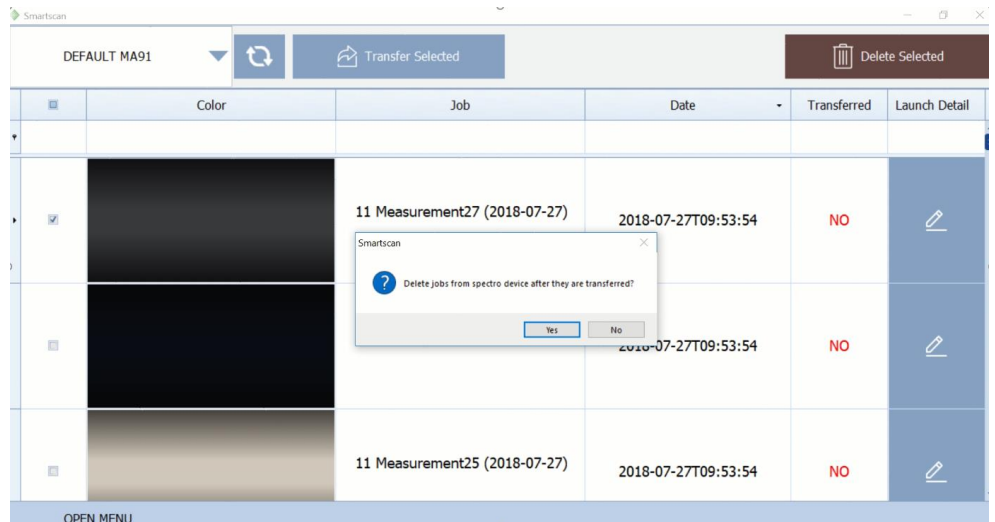




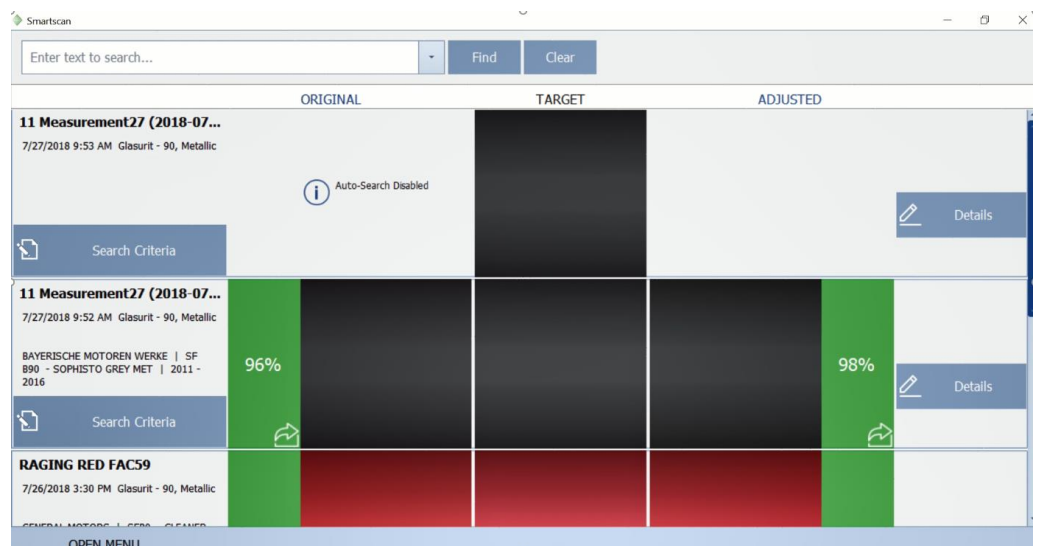
To transfer all jobs, click the “Select All” box. For this training we will select only one job. Select the checkbox and then click the “Transfer Selected” button.



A pop-up will appear. Choose if you would like to delete the selected jobs from the device. This function will only delete jobs from the KOH device.

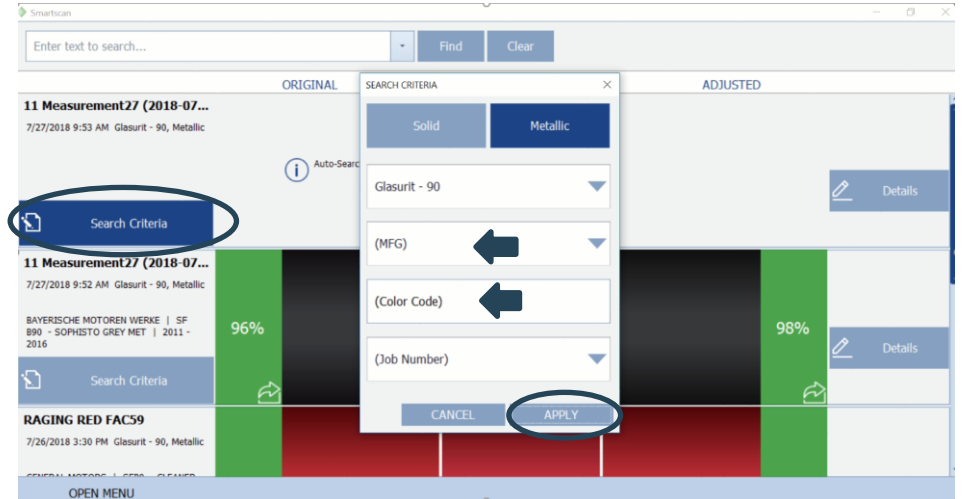


The selected measurement is automatically taken to the “Best Match” screen.

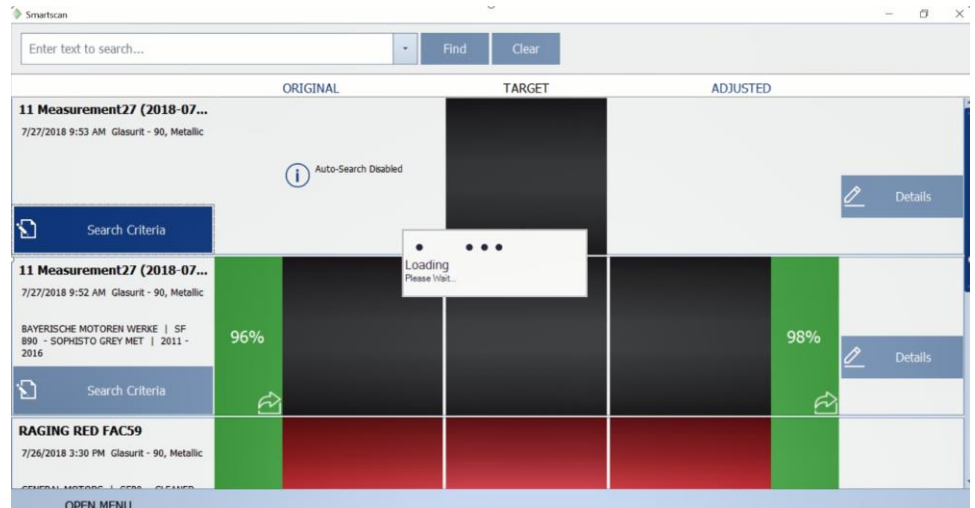




Click “Search Criteria” Make sure either Solid or Metallic is correctly selected. The paintline dropdown will automatically populate with your default paintline. Enter the Manufacturer and Code and click “Apply.”

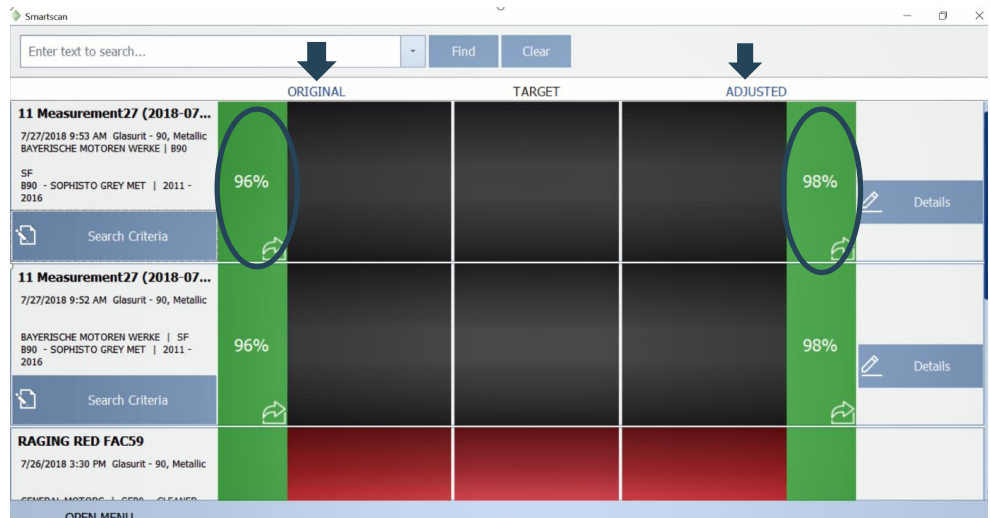
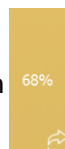


SmartSCAN will search for the best match.



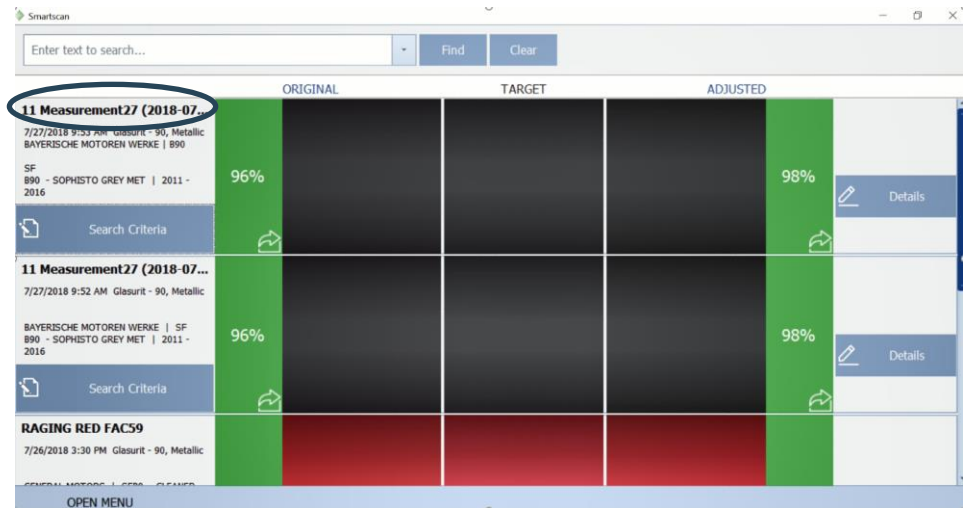
An original and adjusted formula will now be available. From this screen either the original or adjusted formula can be taken to the mixscreen by selecting either the original or adjusted “Go to Mix” button.

It is recommended to only select adjusted if the quality score is 80% or below, which will be displayed in yellow.

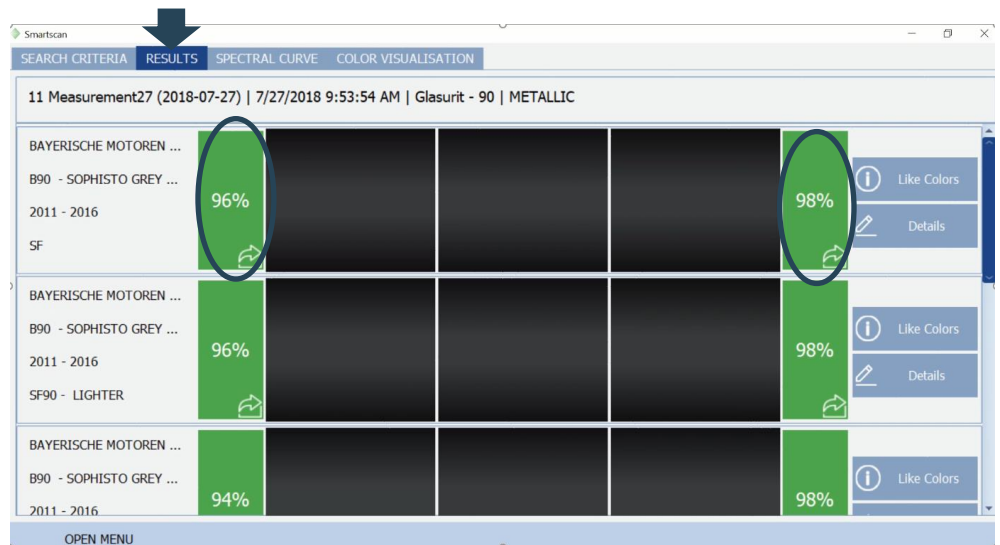




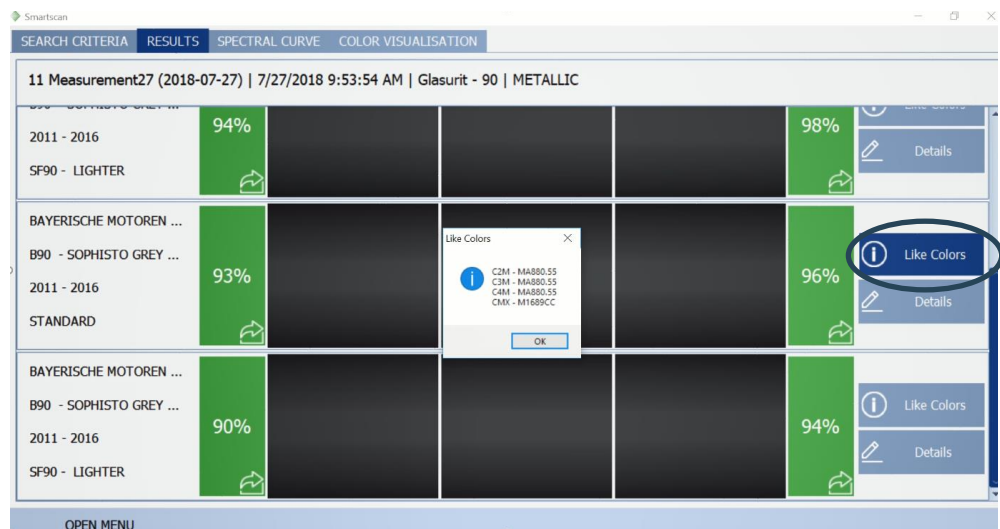
To change job name, select the current **BOLD** job name with your cursor. The job name can now be changed.



The “Results” tab will display the five best matches with options to take the original or the adjusted to the mixscreen by clicking the “Go to Mix” button.



Selecting “Like Colors” will display associated color tools if available.






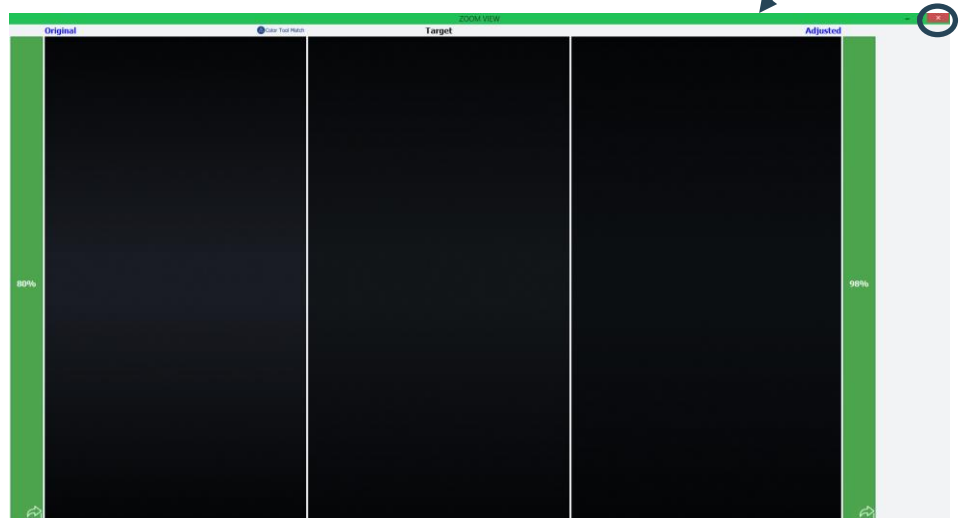
Selecting “Details” will open the “Color Visualization” Tab where you can view the original formula, the adjusted formula and the difference. More details are also provided about the formula such as close or related color tool chips and the Service Formula number.

Larger visual examples of the original, target and adjusted formulas are also available. At any time, the original or adjusted formula can be taken to the mixscreen you are familiar with by selecting the desired “Go to Mix” Button.



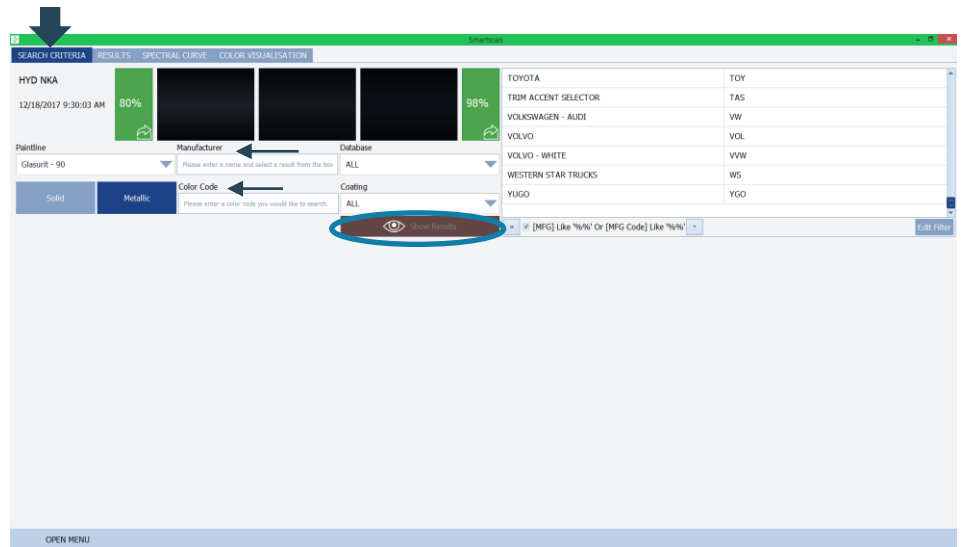
Select “Zoom” button to view a larger image of the original, target and adjusted images.

Click  to leave the Zoom screen and return to the previous “Color Visualization” screen or select either “Go to Mix” button to move to the mixscreen.



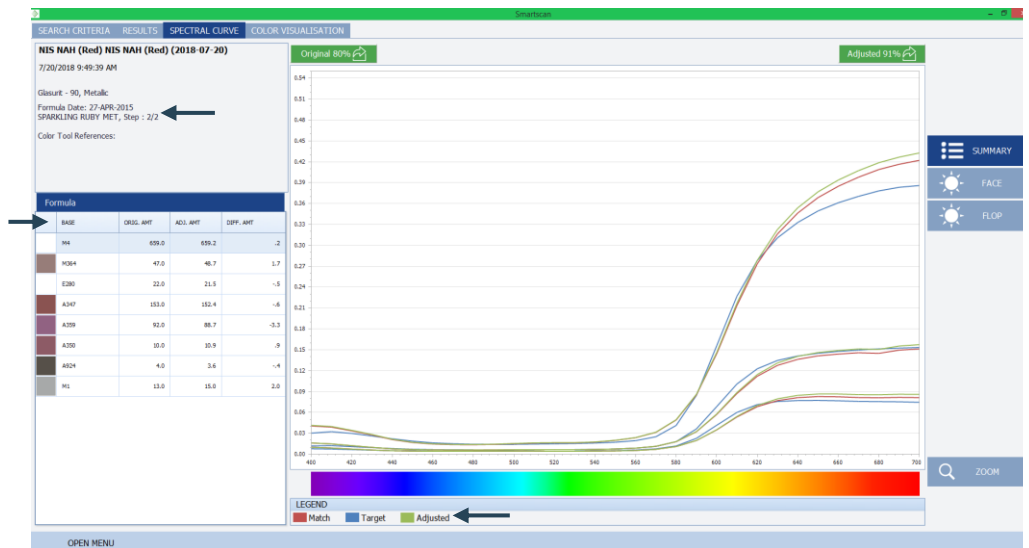


Selecting the “Search Criteria” tab allows you to change the Manufacturer, Color Code, Database, Coating and Paintline and specify either Solid or Metallic. Click “Show Results” to return to the Results tab to view the matches produced from your new criteria returning you to the Results tab for review of new matches.



Clicking the Spectral Curve tab allows you to see the summary of the spectral curve for the original, target and the adjusted.

Formula details such as related color tool chips and formula details can also be viewed in this tab.



Clicking “Face”

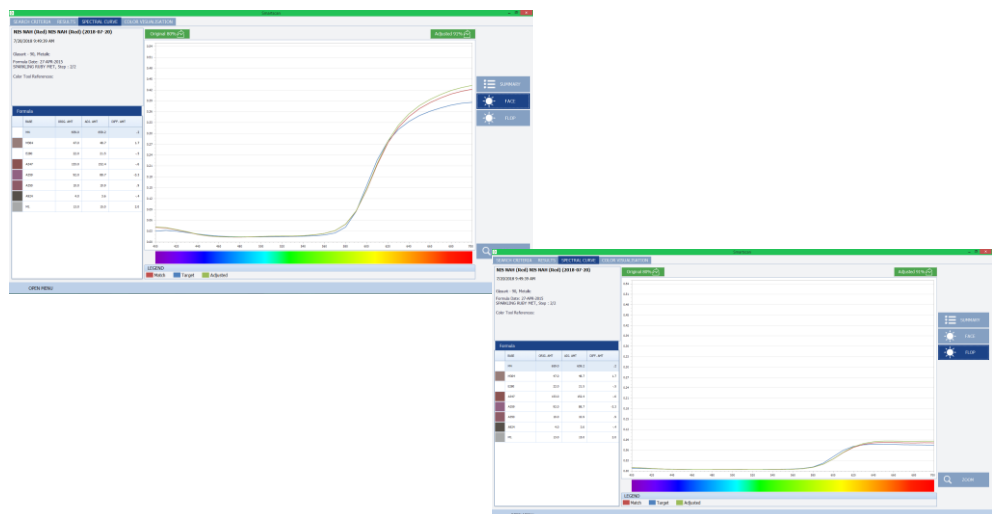
removes all spectral curves but the 45-degree angle for examination.

Clicking “Flop”

removes all curves except the 75-degree angle from the graph for closer inspection.

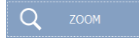
Clicking

Will return all spectral curves to view.





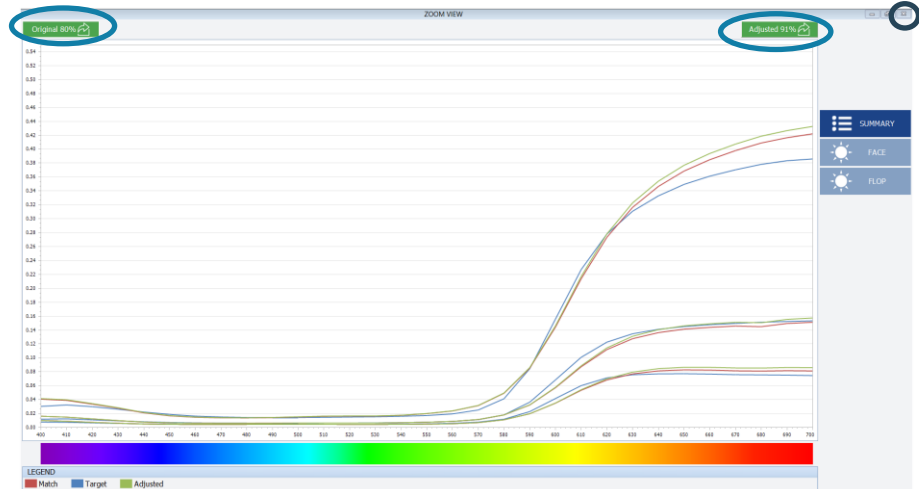
The “Zoom”



button expands the spectral curve graph for a more detailed view.

Click

to leave the Zoom screen to return to the previous Spectral Curve screen or select either Go to Mix button to move to the mixscreen.



This covers the functions, tabs and buttons found within the SmartSCAN module and gives a starting point for new users.

Points to remember \Troubleshooting

- Clicking the “Go to Mix” button at any stage or tab will take your mix to the mix screen.
- Not all Go to Mix buttons will be green. For quality scores 80 and below you will see a yellow button. It is recommended to only select adjusted if the quality score is 80% or below, which will be displayed in yellow.
- If you receive a red Go to Mix button and low-quality score for all results, it is recommended you remeasure and complete the best match search steps again. If all results continue to display a red Go to Mix button, return to “Search Criteria” and change MFG to all and delete “Code” and then examine the results from that search to find a better match.
- To change job names, click the current **BOLD** job name in the Best Match tab to edit. (see pg.12)
- After a device is added it cannot be removed from the device list. (see pg. 8)
- If the instrument fails to communicate, make sure the device is enabled in Settings -> Manage Devices.



- If instrument is enabled but says Cannot Connect, make sure the correct device is selected in the dropdown of the transfer measurements screen and click Sync. (see pg. 9)
- If you have any other questions or issues, contact the helpdesk at **1-800-542-3020**